

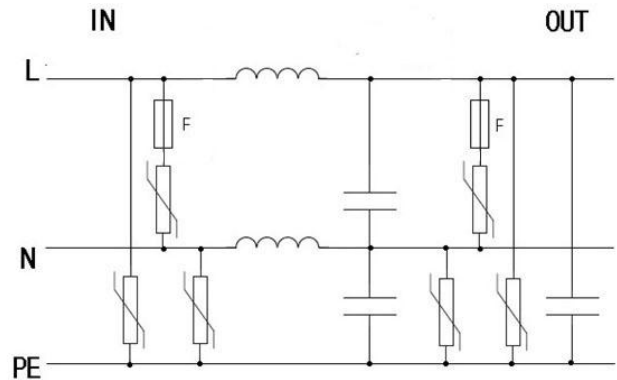
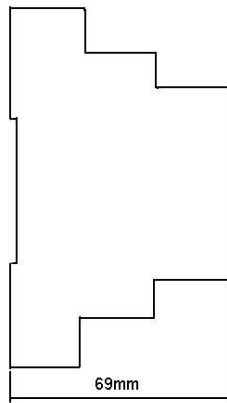
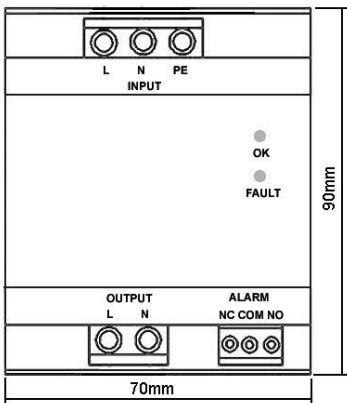
POWER SUPPLY

Single phase 25A Surge Filter Class III/Type 3

■Type 3 ■2-Port SPD ■25A filter ■Imax 25kA ■DIN-Rail

DSF Series, DSF25/...-25A/3P/C-S

- Multi-stage protection circuit with LC Filter design to protect sensitive electronics.
- Provides extensive high frequency & RF filtering
- Application for 120~127V, 220~277V (L-N) TT/TN, or any 1-phase system with a grounded neutral
- Surge capacity 25kA 8/20us
- Rated Load current 25A, 16A is available
- Built in backup fuse for fault current protection
- DIN-Rail mounting
- LED failure indication & remote alarm function available
- Comply with UL1449 4th, IEEE C62.41, CSA C22.2, IEC/EN 61643-11



Model		DSF25/175-25A/3P/C-S	DSF25/320-25A/3P/C-S	
According to		IEC61643-11; UL1449-4th; IEC610006; ANSI/IEEE C62.41; AS1768-1991:AS3100		
Category IEC/EN/UL		Class III/ Type 3/Type 3		
Protection Mode		All mode protecton		
Protection technology		MOV tech, Thermal protection LC filter. Built-in backup fuse		
Power system	Un	120-127V single phase	220-277V single phase	
Max. continuous operating voltage (AC/DC)	Uc	175/230	320/420	
Rated load Current	I _i	25A		
Nominal discharge current(8/20)	I _n	L-N 10kA, N-PE 3kA, L-PE 3kA		
Max. discharge current(8/20)	I _{max}	L-N 25kA, N-PE 6kA, L-PE 6kA		
Voltage impulse (1.2/50us)	U _{oc}	10kV		
Total surge capacity per Line	I _{total}	31 kA (8/20us)		
Voltage protection level	L-N @6kV/3kA	VPR	<0.7kV	<1.0kV
	L-N @I _n	U _p	<0.8kV	<1.2kV
Residual Current	I _{PE}	<1mA		

POWER SUPPLY

Voltage drop:		< 2V at rated load current	
Temporary overvoltage TOV —Withstand mode	U _{tov}	195V/5s	370V/5s
Response time	T _a	<5ns	
Filter attenuation	dB	>45dB @ 1MHz	
Recommended external over current protection in series		25A Fuse or CB	
Protect Status Indication		2 part display, Power OK, Protection fault	
Remote alarm		Dry contact alarm relay – 125Vac 1A; 30Vdc, 2A	
Connecting cable		Power: single-strand 6mm ² ; multi-strand 4mm ² Remote:1.5 mm ² (or 16AWG)	
Environment		Temperature Range: - 10°C ~ +60°C Humidity: ≤95% Altitude: ≤2000m	
Mounting		35mm DIN-rail in accordance with EN 50022/DIN46277-3	
Location Category		Indoor	
Degree of protection		IP20	
Dimension		90mm (L) x 70mm (W) x 69mm (H) approx	
Weight		- approx	
Approvals, Certification	,	CE	

Other Models

Power System	Load Current	Model Recommended	Recommended External Over Current Protection In Series
Single phase 2W+G	16A	DSF25/...-16A/3P/C-S	16A CB/Fuse